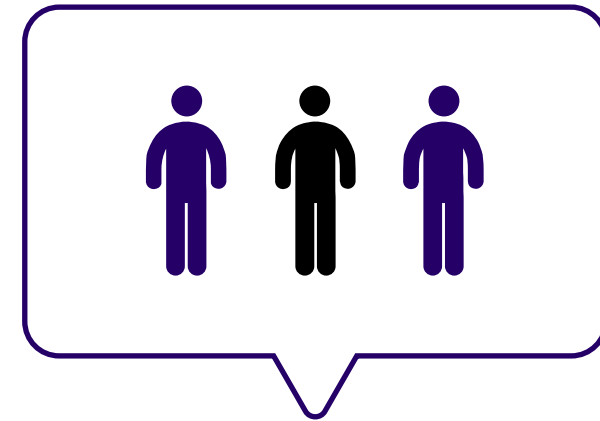


2019-nCov

Statistics

Coronaviruses are zoonotic, meaning they are transmitted between animals and people.



What is it?

Coronavirus (CoV) are a large family of viruses that cause illness ranging from the common cold to more severe diseases such as Middle Eastern Respiratory Syndrome (MERS-CoV) and Severe Acute Respiratory Syndrome (SARS-CoV).



Symptoms



Sore Throat



Confusion



Headaches



**Shortness of
Breath**



Cough



Fever

Prevention



Wash your hands



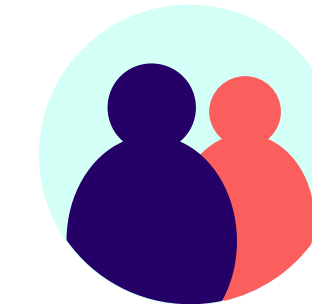
Use an alcohol-based
sanitizer



Cover your cough or
use a tissue



Avoid touching your
face or sick people



Practice social distance

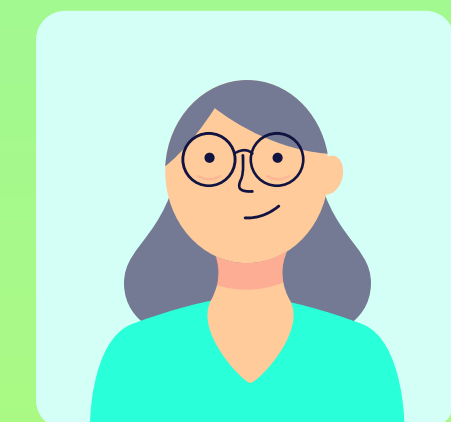


Disinfect frequently
touched objects

Who is at risk?



People with ongoing
pathologies



Seniors